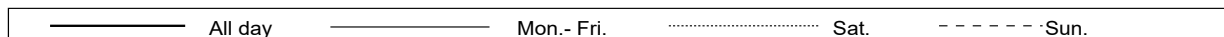
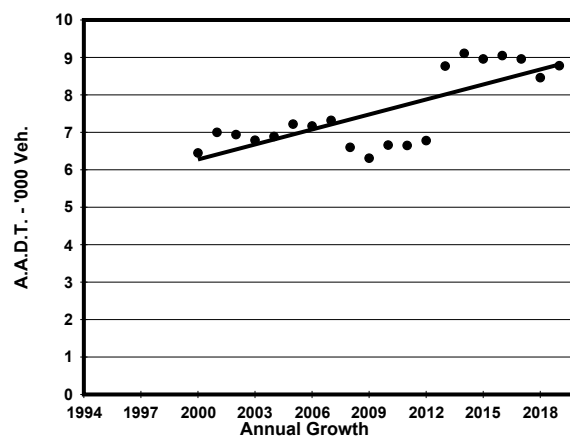
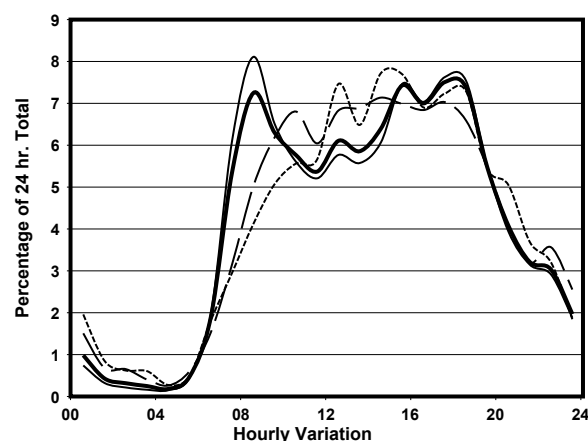
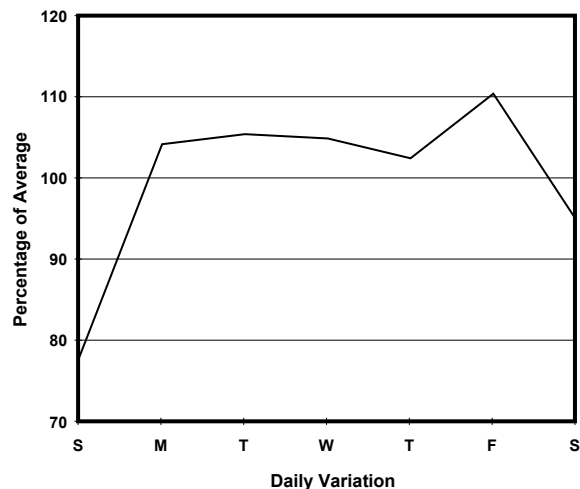
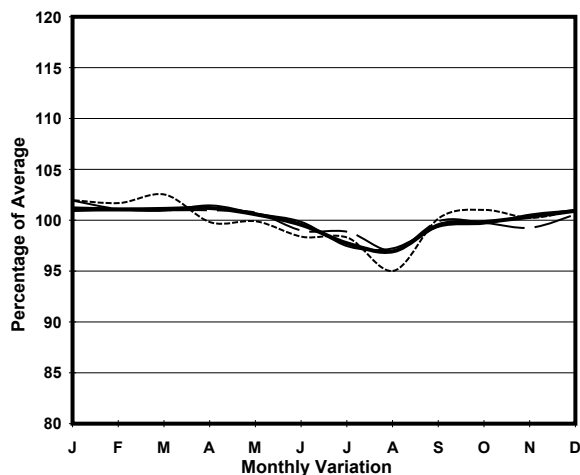


YEAR 2019
 COVERAGE (B) STATION 2206
 ROAD NETWORK MAJOR
 ROAD TYPE DISTRICT DISTRIBUTOR

LINK BELCHER'S ST & VICTORIA RD (from SMITHFIELD to MOUNT DAVIS RD)



1. TRAFFIC FLOW VARIATION AND GROWTH



2. TRAFFIC CHARACTERISTICS (BY DIRECTION)

Parameter	All - Day	Mon. - Fri.	Sat.	Sun.
EAST BOUND				
A.A.D.T.	3950	4230	3680	3150
R 12 / 24 - %	78.6	79.7	75.7	74.3
R 16 / 24 - %	93.5	94.3	91.4	90.9
AM Peak Hour	0800-0900	0800-0900	0900-1000	0900-1000
One-way flow at AM peak hour	320	390	230	170
T - % (AM)	-	8.4	-	-
PM Peak Hour	1700-1800	1700-1800	1700-1800	1700-1800
One-way flow at PM peak hour	330	360	270	270
T - % (PM)	-	12.6	-	-
Prop.of commercial vehicles - 16 hr.	-	14	-	-
WEST BOUND				
A.A.D.T.	4830	5130	4740	3780
R 12 / 24 - %	77	77.7	75.3	74
R 16 / 24 - %	93.5	93.9	92.1	92.1
AM Peak Hour	0800-0900	0800-0900	0900-1000	0900-1000
One-way flow at AM peak hour	320	370	290	180
T - % (AM)	-	17.7	-	-
PM Peak Hour	1800-1900	1800-1900	1600-1700	1600-1700
One-way flow at PM peak hour	340	380	330	270
T - % (PM)	-	11.9	-	-
Prop.of commercial vehicles - 16 hr.	-	13.1	-	-

3. OTHER INFORMATION AND COMMENT

4. Vehicle classification and occupancy - Monday to Friday

Time		Class of vehicle									
		Motor Cycle	Private Car	Taxi	Private LB	PLB	Goods veh.		Non Fr. Bus	Fr. Bus	
							Light	M & H		SD	DD
0700-0800	Pro	3.9	32.9	18.8	2.3	11.0	11.0	4.7	10.2	0.6	4.7
	Ocp	1.2	1.5	2.2	6.0	12.9	1.4	1.2	22.4	21.3	20.5
0800-0900 Peak hour	Pro	2.8	56.4	6.0	1.9	5.6	14.3	6.0	4.2	0.2	2.7
	Ocp	1.2	1.5	1.8	5.8	15.2	1.7	1.4	13.2	38.0	21.0
0900-1000	Pro	2.4	41.6	8.6	1.2	5.5	25.1	7.3	3.7	0.3	4.3
	Ocp	1.0	1.5	1.9	2.0	14.8	1.9	1.3	15.2	31.0	11.2
1000-1100	Pro	4.1	34.9	15.4	2.4	7.1	23.1	6.5	1.8	0.6	4.1
	Ocp	1.1	1.5	1.9	3.0	12.6	1.9	1.6	1.0	19.8	4.9
1100-1200	Pro	3.8	41.7	10.6	3.0	6.8	22.0	4.5	1.5	0.0	6.1
	Ocp	1.0	1.6	1.6	1.5	11.8	1.6	1.0	2.5	0.0	7.5
1200-1300	Pro	10.6	29.6	19.0	2.1	7.1	17.6	6.4	2.8	0.0	4.8
	Ocp	1.1	1.7	2.1	3.0	14.1	1.6	1.6	15.3	0.0	10.2
1300-1400	Pro	3.2	40.6	15.9	1.6	9.6	14.3	4.8	4.0	0.0	6.0
	Ocp	1.0	1.5	2.0	2.5	14.8	1.6	1.2	12.2	0.0	7.1
1400-1500	Pro	1.4	34.4	20.4	2.8	7.0	22.5	2.1	3.5	0.0	5.8
	Ocp	1.0	1.6	1.9	5.5	12.0	1.8	1.7	1.8	0.0	6.5
1500-1600	Pro	1.1	45.7	20.1	1.6	6.5	14.7	2.2	3.8	0.0	4.3
	Ocp	2.0	1.6	1.9	2.3	14.1	1.9	1.0	17.1	0.0	10.3
1600-1700	Pro	2.0	51.3	8.7	3.3	7.3	9.3	5.3	6.7	0.0	6.0
	Ocp	1.0	1.4	2.3	3.2	14.8	1.9	1.6	4.4	0.0	10.9
1700-1800	Pro	3.7	46.0	17.2	1.8	7.4	9.2	4.3	4.9	0.0	5.5
	Ocp	1.2	1.7	2.2	5.0	15.8	1.5	1.3	2.0	0.0	10.7
1800-1900	Pro	5.8	48.5	15.2	1.2	7.6	7.0	1.2	8.8	0.0	4.7
	Ocp	1.0	1.6	1.9	7.5	15.1	1.2	1.0	30.7	0.0	15.5
1900-2000	Pro	4.0	45.6	26.1	0.0	6.7	4.7	4.7	1.3	0.3	6.5
	Ocp	1.0	1.3	1.8	0.0	14.1	1.6	1.1	8.5	22.5	7.9
2000-2100	Pro	5.6	42.9	23.3	0.0	9.3	7.5	3.7	0.9	0.2	6.5
	Ocp	1.0	1.6	2.2	0.0	12.9	1.6	1.3	3.0	9.0	7.6
2100-2200	Pro	7.1	47.7	25.4	0.0	9.1	2.0	1.0	1.0	0.3	6.3
	Ocp	1.0	1.4	1.8	0.0	10.3	1.0	1.0	1.0	7.0	8.7
2200-2300	Pro	5.6	51.4	21.2	0.0	13.4	0.0	2.2	0.0	0.6	5.6
	Ocp	1.2	1.5	1.7	0.0	8.6	0.0	3.0	0.0	6.5	7.4
16 hours	Pro	4.0	43.5	16.3	1.7	7.6	13.5	4.3	3.9	0.2	5.1
	Ocp	1.1	1.5	2.0	3.9	13.4	1.7	1.4	14.3	20.9	10.3

Legend: Pro. Proportion of vehicles in % (Sum may not add up to 100% due to figure rounding)*

Ocp. Average occupancy of vehicles including both driver and passengers*

M&H Medium and Heavy

* All traffic data are collected from combined bounds